



**keep it  
CURRENT**

**OPW 53869 COLE CREEK  
CSO 202 PHASE II SEWER  
SEPARATION PROJECT**  
PRE-CONSTRUCTION PUBLIC MEETING  
May 1<sup>st</sup>, 2024



1

## INTRODUCTIONS AND PURPOSE

- **Presenter**
  - Ryan Rossell, Carollo Engineers
- **Purpose**
  - Notify public of up-coming construction
  - Provide general understanding of construction phasing
  - Review construction schedule
  - Contact Information



2

# MEETING AGENDA

- CSO Program Overview
- Project Overview
- Construction Activity
- Construction Schedules
- Public Involvement and Communications

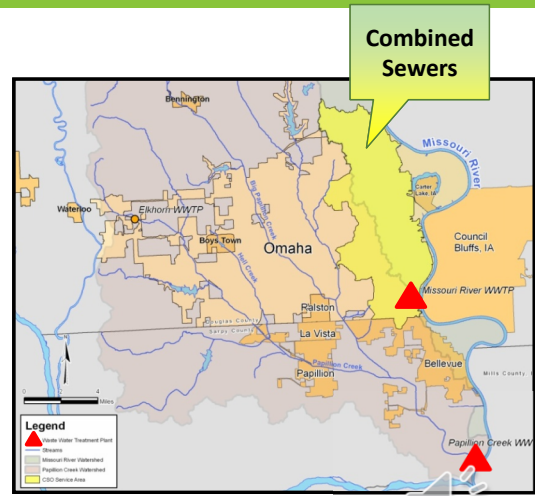


## CSO PROGRAM OVERVIEW



# COMBINED SEWER SERVICE AREA

- 275 sq mi drainage area
- 600,000 service population
- Combined sewers generally located on the east side of Omaha
- Program focused on projects in combined sewershed

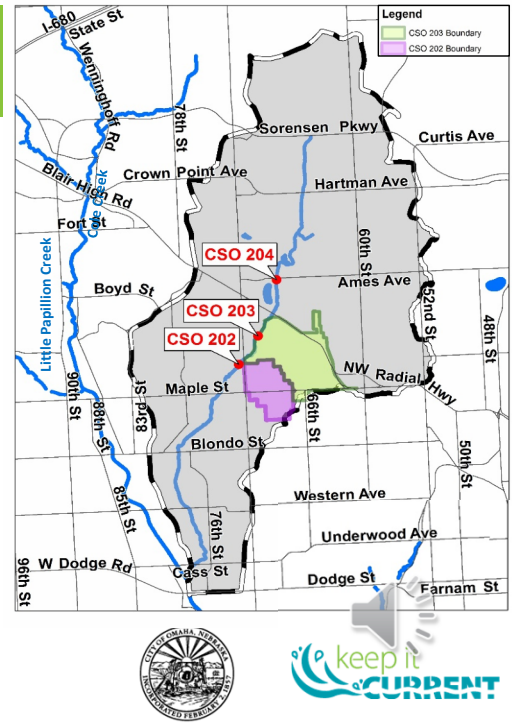


## PROJECT OVERVIEW



# COLE CREEK BASIN

- Project located in Cole Creek basin
- Basin overview
  - 4,300 Acres
  - Over 1,300,000 feet of sewers
- Project focus: CSO 202

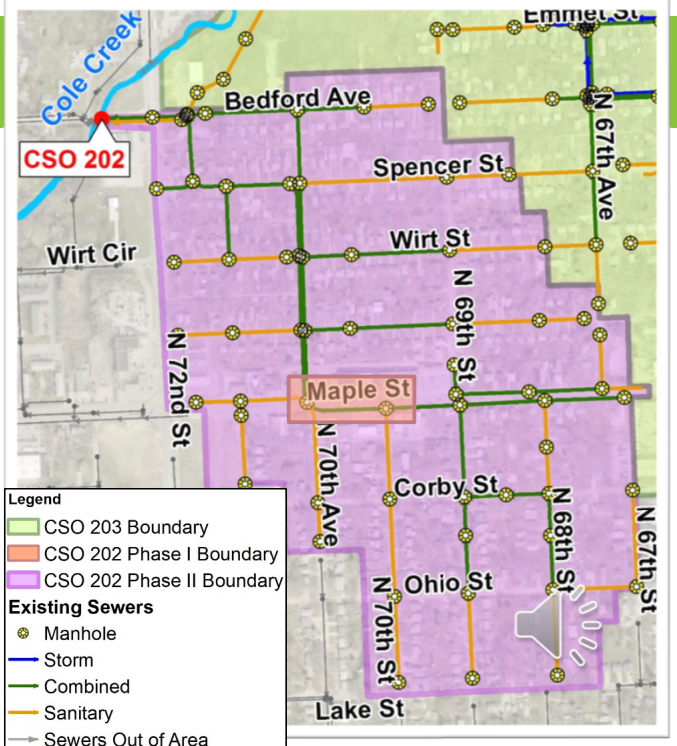


7

# CSO 202 BASIN

## Goals:

- Separate Sewers
- Not increase storm flows to Cole Creek
- Re-use existing infrastructure



8

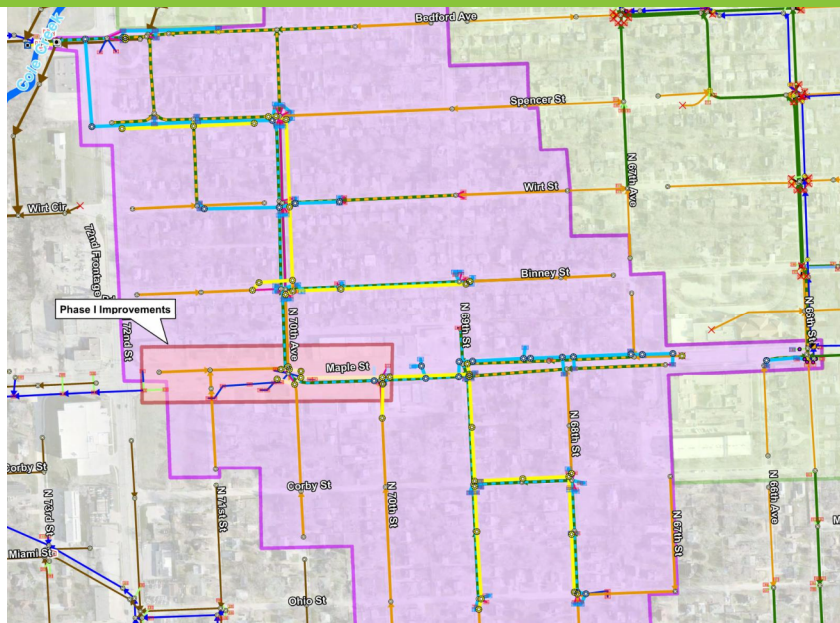
# PROJECT IMPROVEMENTS

- Construction of new storm and sanitary sewers
- Pavement/sidewalk removal and replacement
- System rehabilitation



9

# SEWER IMPROVEMENTS

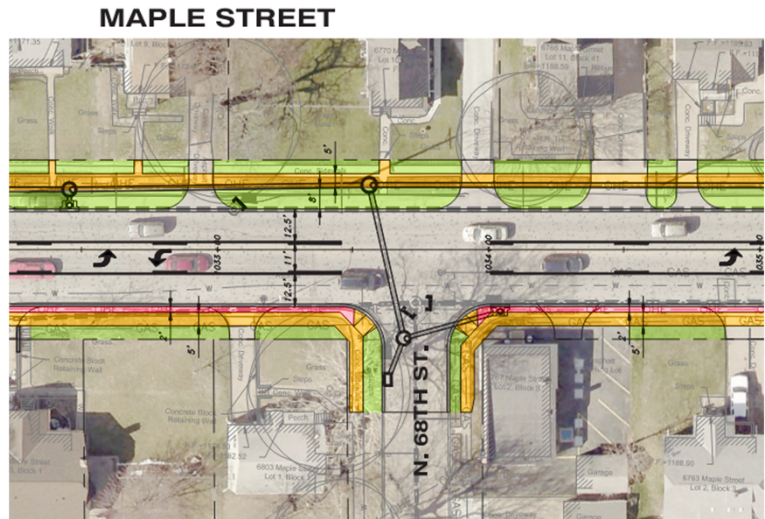


	CSO 202 Phase II Project Area
	CSO 202 Phase I Project Area
	CSO 203 Project Area
<b>Proposed Structures</b>	
	Sanitary MH
	Storm MH
	Inlet
<b>Proposed Sewers</b>	
	Sanitary
	Storm
<b>Future Service</b>	
	Existing Sanitary/Sa... Interceptor
	Existing Storm
	Existing Sanitary
	Combined Converted Sanitary
	Combined Converted Storm

10

# SAFETY IMPROVEMENTS

- 3-lane section
- Center turn lane
- Improved sight distances
- New sidewalks
- Improved safety



11



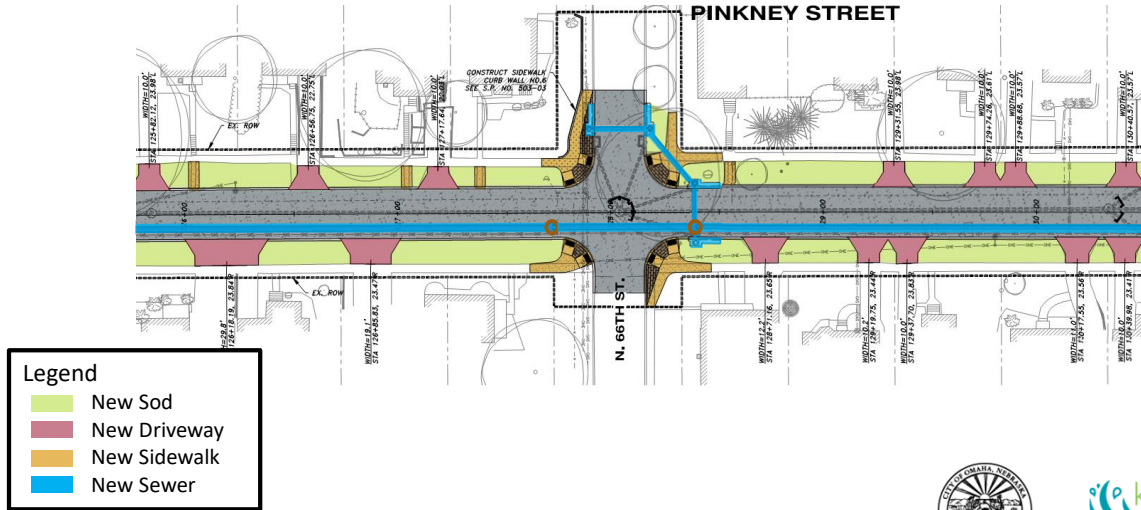
**CONSTRUCTION  
ACTIVITY**



12

# CONSTRUCTION EXAMPLE

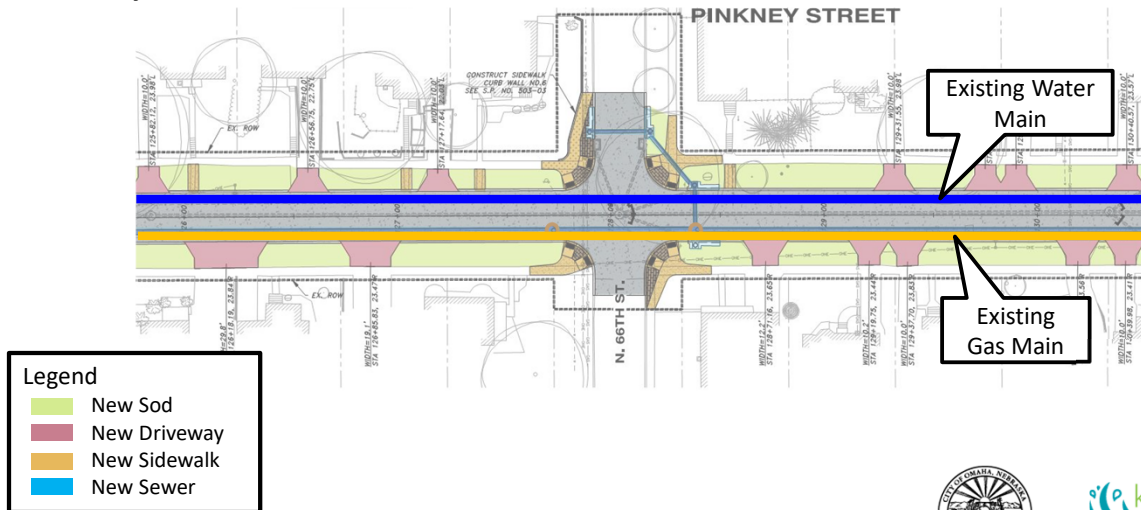
## Proposed Plan View



13

# CONSTRUCTION PROGRESSION

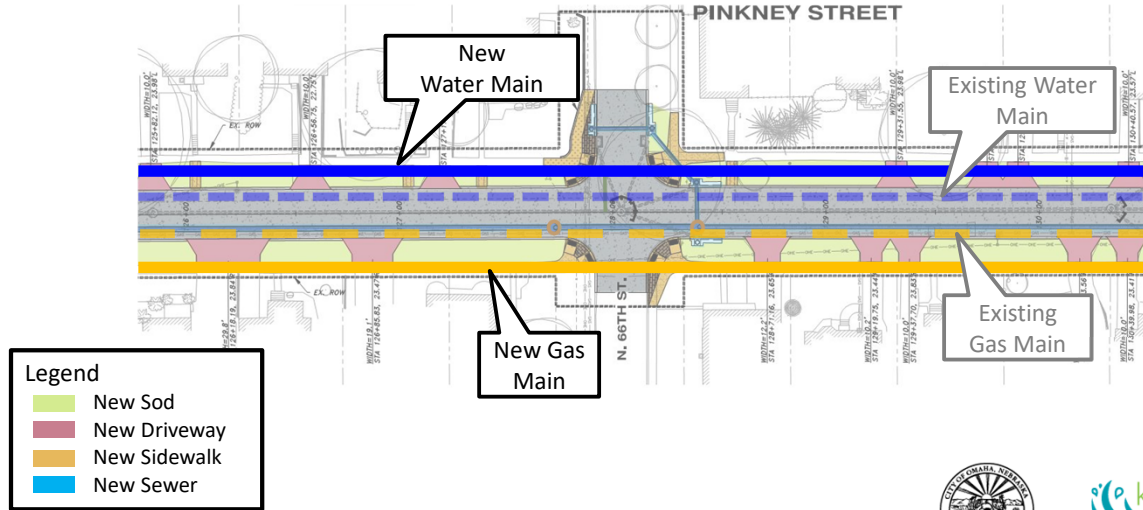
## Local Utility Relocations



14

# CONSTRUCTION PROGRESSION

## Local Utility Relocations



15

# CONSTRUCTION PROGRESSION

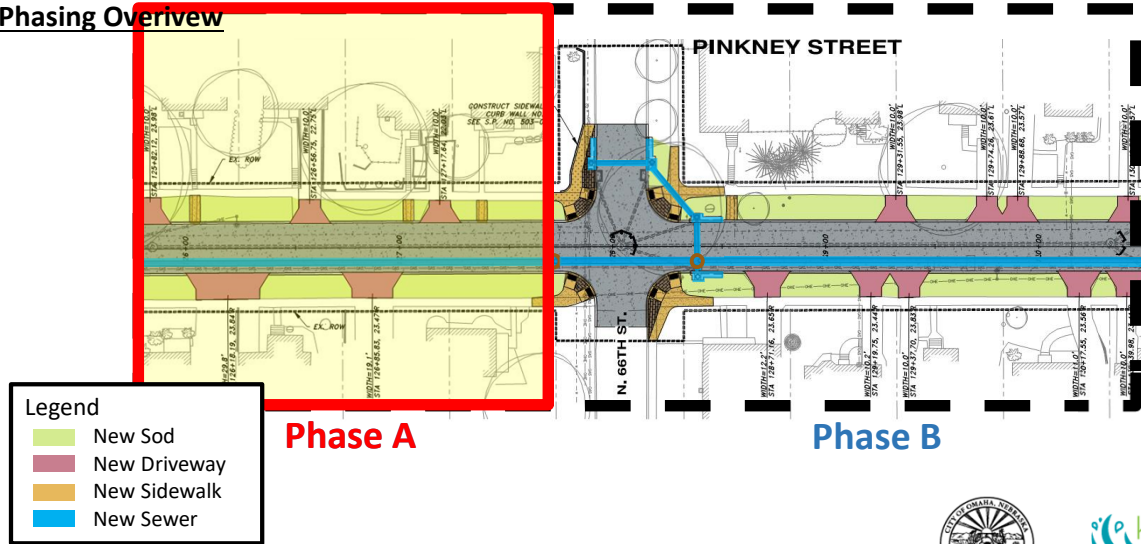


16



# CONSTRUCTION PROGRESSION

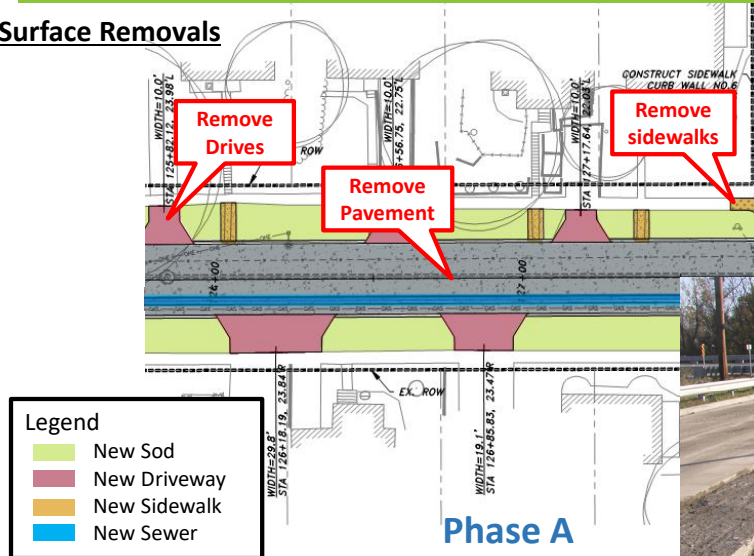
## Phasing Overview



17

# CONSTRUCTION PROGRESSION

## Surface Removals



## Surface Removals

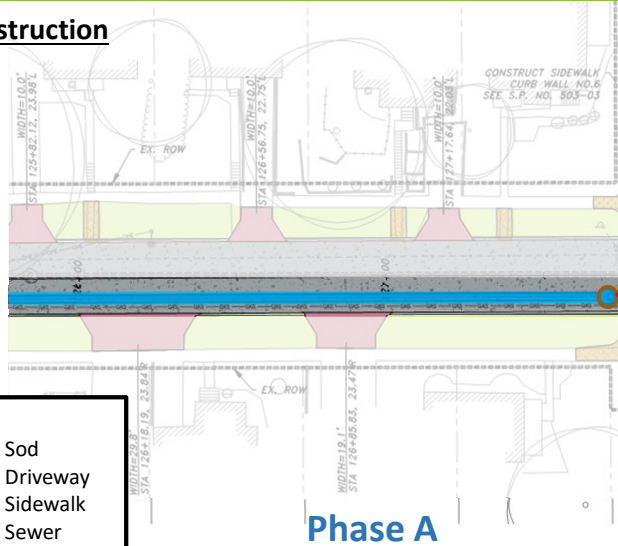
- Pavement
- Driveways
- Sidewalk
- Select Trees



18

# CONSTRUCTION PROGRESSION

## Sewer Construction



Legend	
	New Sod
	New Driveway
	New Sidewalk
	New Sewer

## Sewer Construction

- Excavate
- Construct Sewer
- Backfill

Construct new sewers



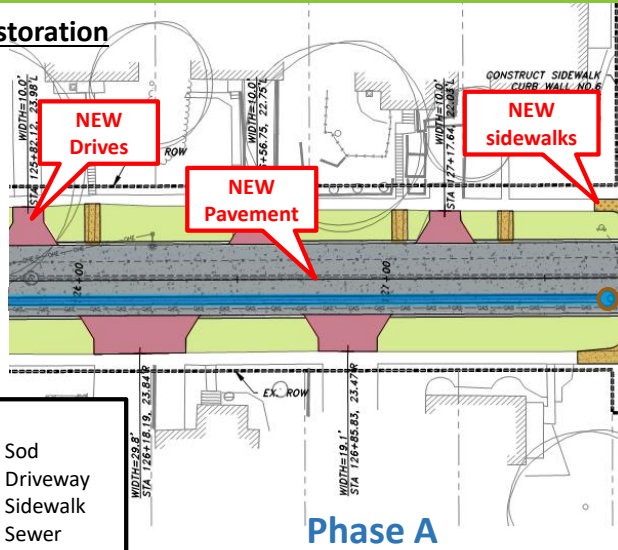
# CONSTRUCTION PROGRESSION

- Open Trench Construction
  - Conventional Sewer Construction Method
  - Excavation/Pipe Placement/Backfill



# CONSTRUCTION PROGRESSION

## Surface Restoration



Legend	
	New Sod
	New Driveway
	New Sidewalk
	New Sewer

## Surface Restoration

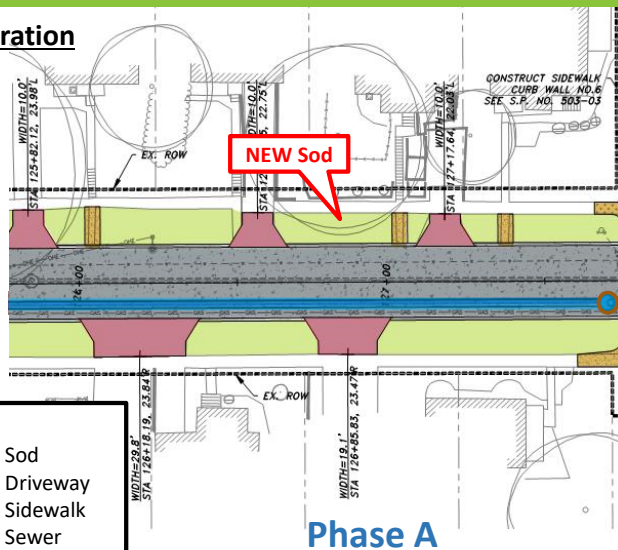
- Pavement
- Driveways
- Sidewalks



21

# CONSTRUCTION PROGRESSION

## Final Restoration



Legend	
	New Sod
	New Driveway
	New Sidewalk
	New Sewer

## Final Restoration

- Sod
- Trees



22

# CONSTRUCTION PROGRESSION

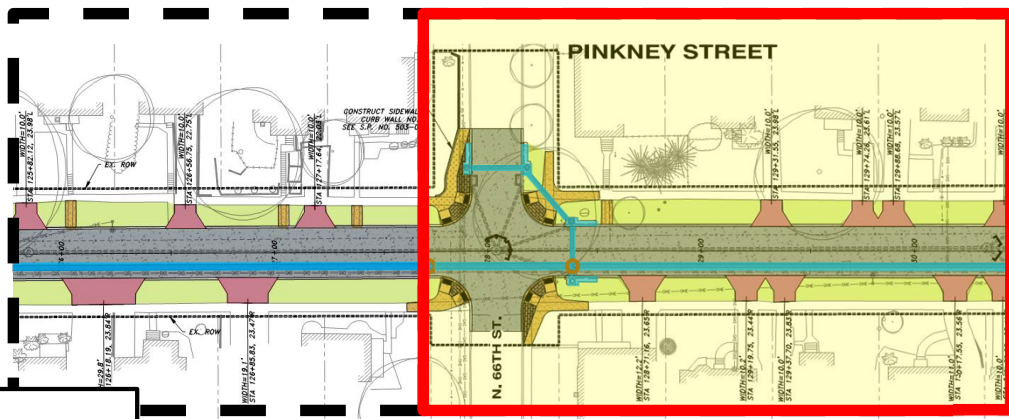
## Final Restoration Example

- CSO 203 Area
  - 69<sup>th</sup> and Evans



23

# CONSTRUCTION PROGRESSION



Legend	
<span style="display:inline-block; width:15px; height:10px; background-color:lightgreen;"></span>	New Sod
<span style="display:inline-block; width:15px; height:10px; background-color:lightcoral;"></span>	New Driveway
<span style="display:inline-block; width:15px; height:10px; background-color:orange;"></span>	New Sidewalk
<span style="display:inline-block; width:15px; height:10px; background-color:lightblue;"></span>	New Sewer

Phase A

Phase B



24

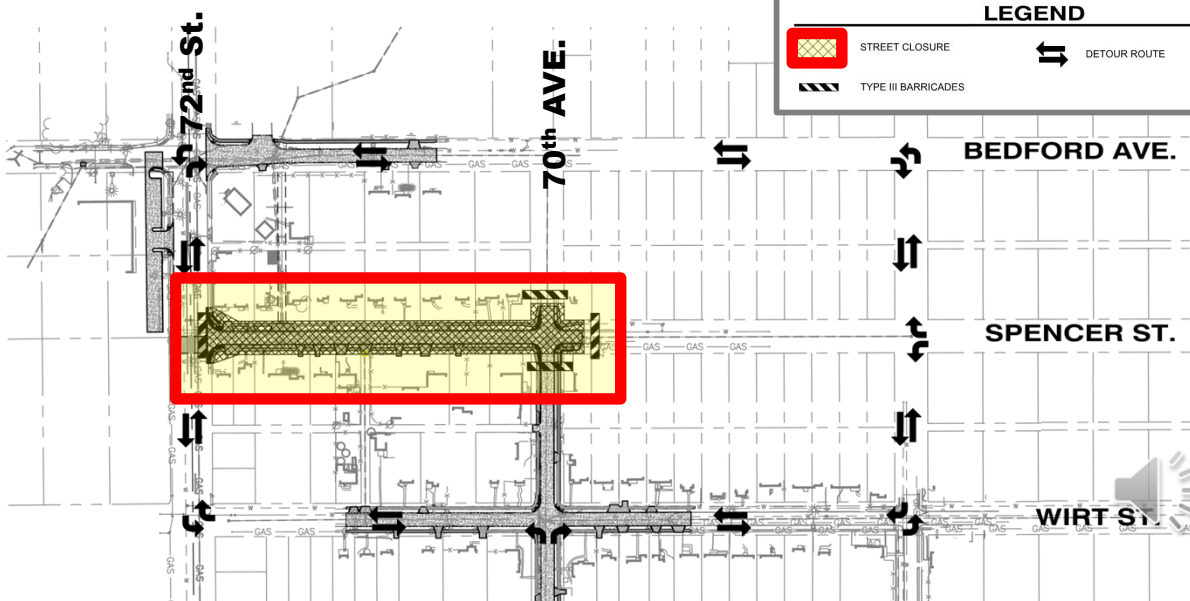
## TRAFFIC ROUTING EXAMPLE (RESIDENTIAL)

- Construction phasing will include detours
- Through traffic is detoured around construction
- Local access will be provided



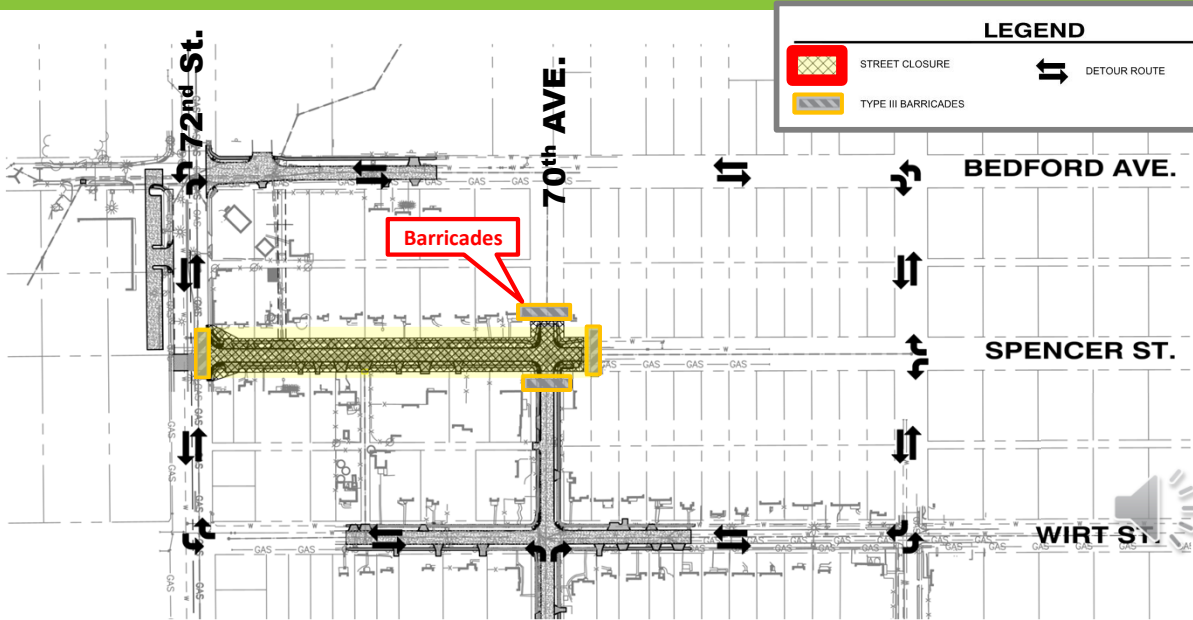
25

## TRAFFIC ROUTING EXAMPLE (RESIDENTIAL)



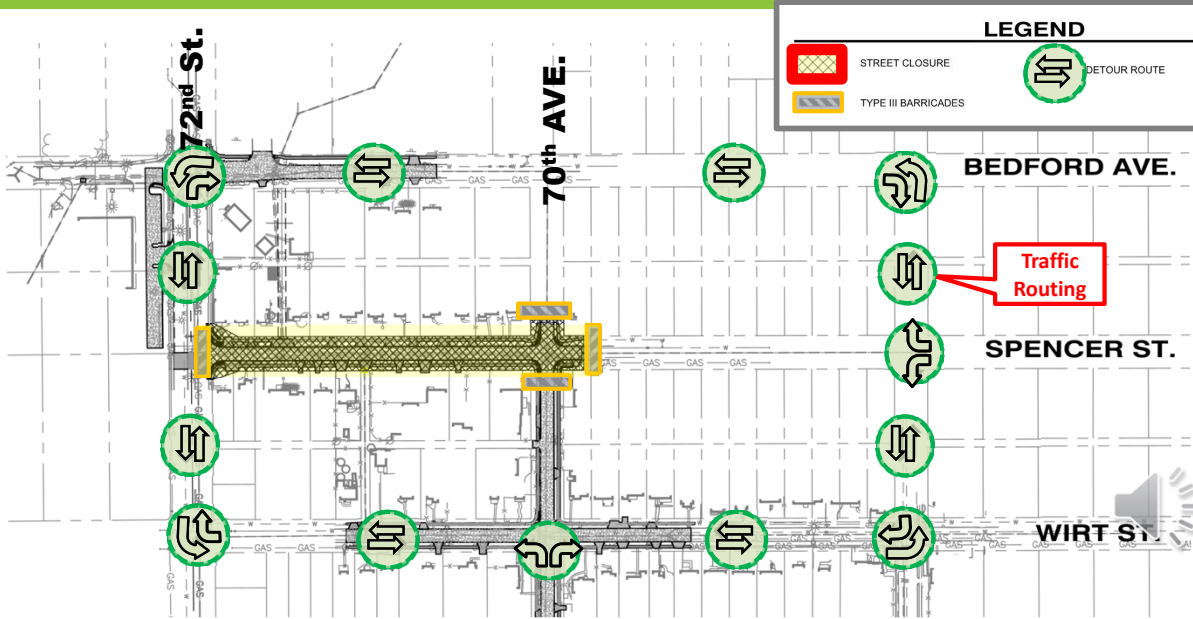
26

# TRAFFIC ROUTING EXAMPLE (RESIDENTIAL)



27

# TRAFFIC ROUTING EXAMPLE (RESIDENTIAL)



28

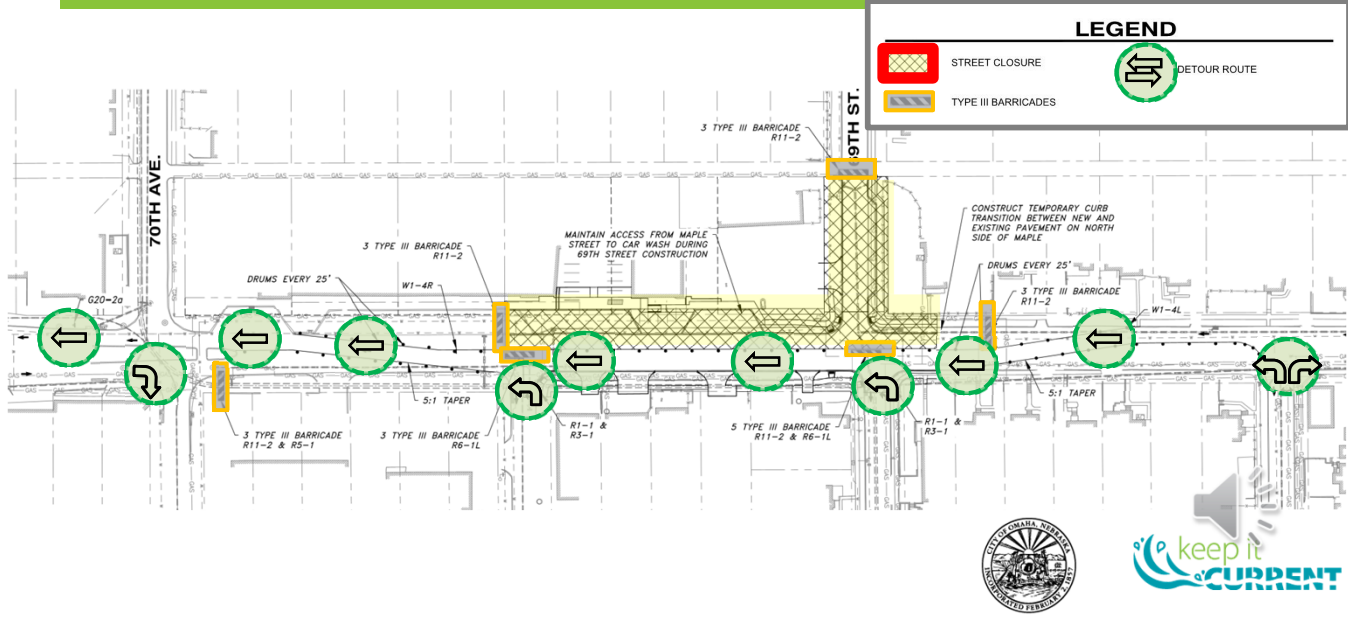
# TRAFFIC ROUTING EXAMPLE (MAPLE)

- East bound traffic will be detoured during Maple Street work
- Multiple phases planned
- Starting work near Benson West (66<sup>th</sup>)
- Signage located near 72<sup>nd</sup>



29

# TRAFFIC ROUTING EXAMPLE (MAPLE)



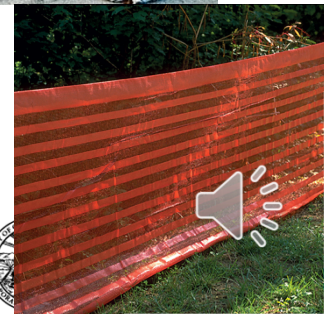
30

# TRAFFIC AND PUBLIC SAFETY

- Phased work
- Roadway restrictions
- Construction traffic



**PLEASE USE CAUTION  
DURING CONSTRUCTION!**



31



**CONSTRUCTION  
SCHEDULES**

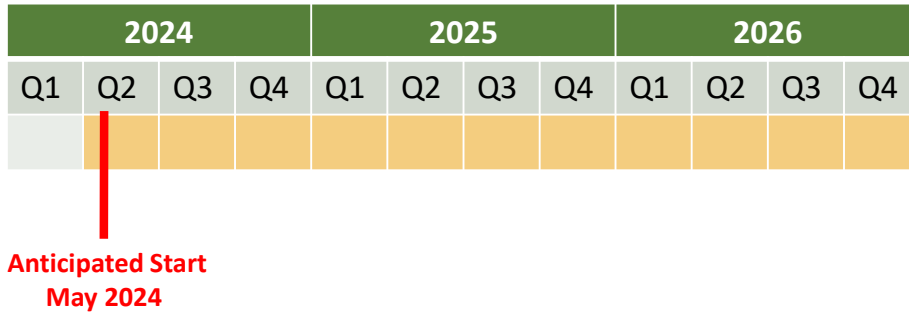


32



# CONSTRUCTION SCHEDULES

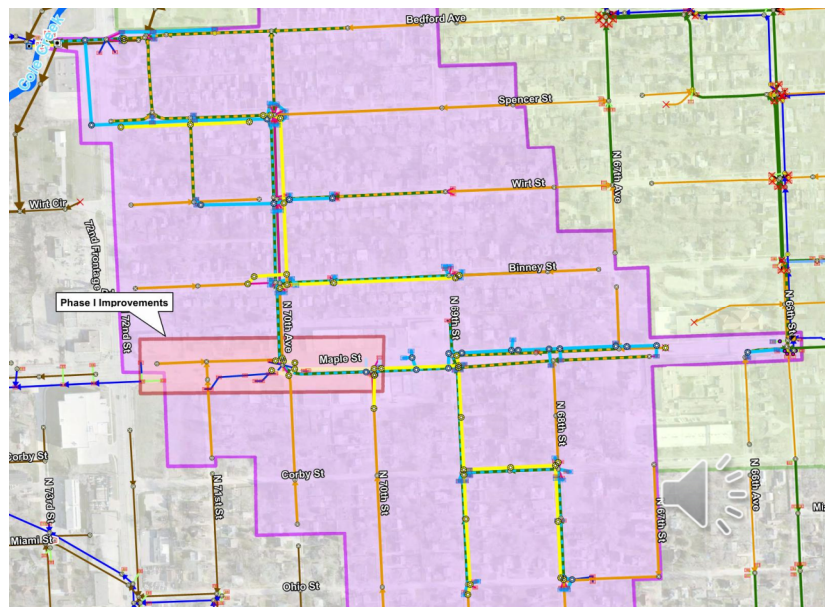
- CSO Construction duration ~30 months



33

# CONSTRUCTION PHASING

- Maple
- South of Maple
- North of Maple



34

## PROGRESS TO DATE

### Utility Relocation Work

- MUD
  - Water Main Replacements
  - Gas Main Replacements
- OPPD
- Century Link
- Cox



35



**PUBLIC INVOLVEMENT  
AND COMMUNICATIONS**



36

# PUBLIC PARTICIPATION



- Public Meetings
  - General Information on CSO
  - Project Specific Updates
  - Allows for Your Input

- ✓ **CSO 202/203 - Project Kickoff Public Meeting** (June 2017)
- ✓ **CSO 202/203 - Preliminary Design Public Meeting** (May 2018)
- ✓ **CSO 202 – BNA Virtual Meeting** (Feb 2021)
- ✓ **CSO 202 – Final Design Public Meeting** (Feb 2022)
- ✓ **CSO 202 - Pre-Construction Public Meeting** (Now) 

37

# CONTACT INFORMATION

Company	Role	Name	Phone #	E-Mail
City of Omaha	City Construction Manager	Jesse Ayala	(402)444-5220	Jesse.Ayala@cityofomaha.org
L.G. Roloff Construction	Contractor Project Manager	C. J. Snodgrass	(402)679-4486	cjs@roloffinc.com



38

# PUBLIC COMMUNICATION

- **Public Web Site:**  
<https://keepitcurrentomaha.com/>
  - **Email:** [info@keepitcurrentomaha.com](mailto:info@keepitcurrentomaha.com)
  - **Phone:** 402-444-5220
- Refer "OPW 53869 CSO 202 Phase 2"

**Full Project Name:**  
**Cole Creek CSO 202 Sewer Separation, Phase 1 and CSO 202 Phase 2 – 70th Avenue & Spencer Street - OPW 53869**



39

# PROJECT COMMENTS

## Project Specific Site

<https://keepitcurrentomaha.com/project-guide/cole-creek-cso-202-sewer-separation-phase-1-and-cso-202-phase-2-70th-avenue-spencer-street-opw-53869>

**Public Facilitator**  
 Felsburg Holt & Ullevig  
 Dave Lampe  
 (402) 445-4405

40

## COMMENTS OR CONCERNS SUMMARY

- Contact Jesse Ayala (City of Omaha Construction)
- Send email to [info@keepitcurrentomaha.com](mailto:info@keepitcurrentomaha.com)
- Contact Dave Lampe (public facilitator)
- Call public works 402-444-5220
- Contact City inspector on job site
- Prefer not to contact Roloff directly – City out of the loop

**Refer to "OPW 53869 CSO 202 Phase 2" for all inquiries.**



41



**THANK YOU FOR YOUR  
TIME.**



42